

## Lesson 11

## 1 PHRASE OF THE DAY

今日のフレーズ

# As you can see here, the chart...

こちらから分かるように、この表は、、、

## 2 SITUATION

状況

Rachel reviews a graphical breakdown of sales from last year.  
レイチェルは昨年からの売上グラフの内訳について説明しています。



## 3 DIALOGUE

ダイアログ

Directions: First repeat after your tutor and then practice each role.

**Serge :** Rachel, would you mind briefly going over your graphical breakdowns of our sales from last year?

**Rachel:** Certainly. The line graph here gives us a breakdown of sales by quarters. **As you can see here, the chart** shows us that we started the year with a solid sales figure. Sales increased dramatically in the second quarter, slumped significantly in the third quarter and recovered nicely in the fourth. The second graph, a bar graph, gives us a comparison of urban and rural sales. Evidently, our urban sales make up 70% of total sales. Finally, we have two pie charts showing market share in urban and rural areas. We have maintained our solid 35% market share in the urban area, but still have only a 10% market share in the rural area. Seems like rural market sales have a lot of potential for growth.

**Serge:** Nice analysis, Rachel.

## 4 VOCABULARY

語い

Directions: First repeat after your tutor and then read aloud by yourself.

**graphical** 図形、図式

**quarter** 4半期

**bar graph** 棒グラフ

**breakdown** 内訳

**line graph** 折れ線グラフ

**pie chart** 円グラフ

## Lesson 11

## 5 LANGUAGE FOCUS

今日のポイント

# As you can see here, the chart...

こちらから分かるように、この表は、、、

## Meeting - Explaining a Chart or Graph

Directions: First repeat after your tutor and then read aloud again by yourself.

This graph indicates that ...

As can be seen from this graphical representation...

I think it's quite evident from this chart that...

The statistical difference shown by the graph is minimal/significant.

As you can see from the chart...

This graph here signifies a rise/fall in ...

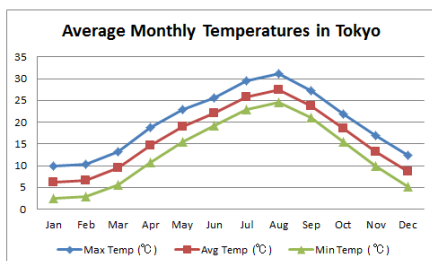
What can be interpreted from this graph is that ...

## 6 ACTIVITY

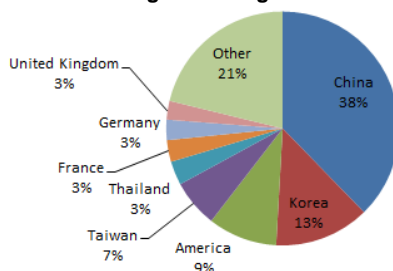
練習

Activity 1: Have you ever had to explain statistics or graphs/charts during a meeting? When was the last time you had to explain a graph/chart in a meeting in English? Was it difficult? If you have never had to, do you think it would be? Why/Why not?

Activity 2: Try describing the graphs below:



Percentage of Foreign Students



## Hints

ヒント

**downward** 下降している

**fell** 落ちる

**gradual** 緩やかな

**fluctuated** 変動して

**largest** 最大の

**lowest** 最低の

**peaked** 最高点

**steep** 急な

**upward** 上向きに